

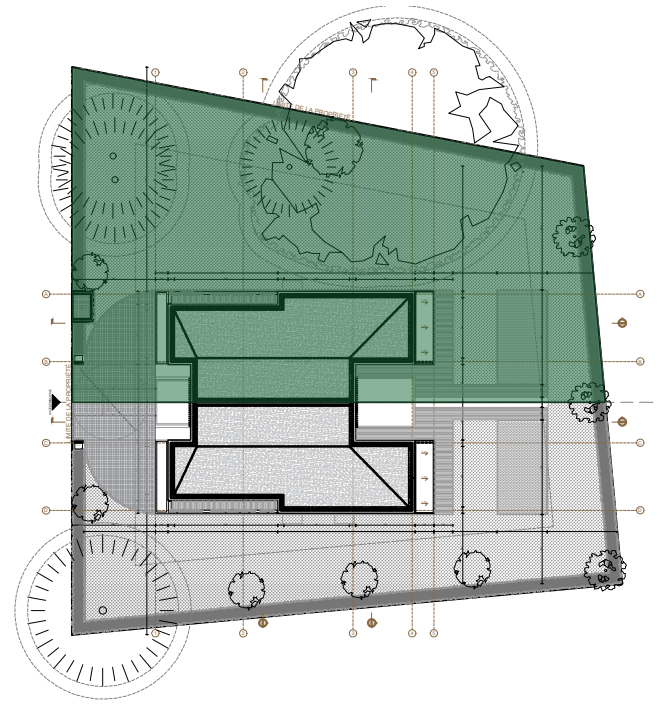
# VILLAS JUMELÉES BUCLINES 32-34

Chemin des Buclines 32, 1253 Chêne-Bougeries

## VILLA A

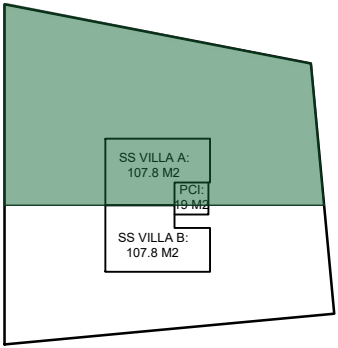
### INFORMATIONS RELATIVES AU LOT

|                 |   |         |                |                    |   |      |                |
|-----------------|---|---------|----------------|--------------------|---|------|----------------|
| - Surface Brute | = | 224,8   | m <sup>2</sup> | - Terrasse         | = | 37,7 | m <sup>2</sup> |
| - Surface SS    | = | 107,8   | m <sup>2</sup> | - Jardin           | = | 634  | m <sup>2</sup> |
| - N° hors-sol   | = | 2       |                | - Jardinière       | = | 7,5  | m <sup>2</sup> |
| - N° sous-sol   | = | 1       |                | - Piscine (option) | = | 30   | m <sup>2</sup> |
| - H sous plaf   |   |         |                | - Terrain          | = | 934  | m <sup>2</sup> |
| SS              | = | 2,40/70 | m              |                    |   |      |                |
| REZ             | = | 2,70    | m              |                    |   |      |                |
| ETAGE           | = | 2,70    | m              |                    |   |      |                |
| - Balcons       | = | 17,4    | m <sup>2</sup> |                    |   |      |                |

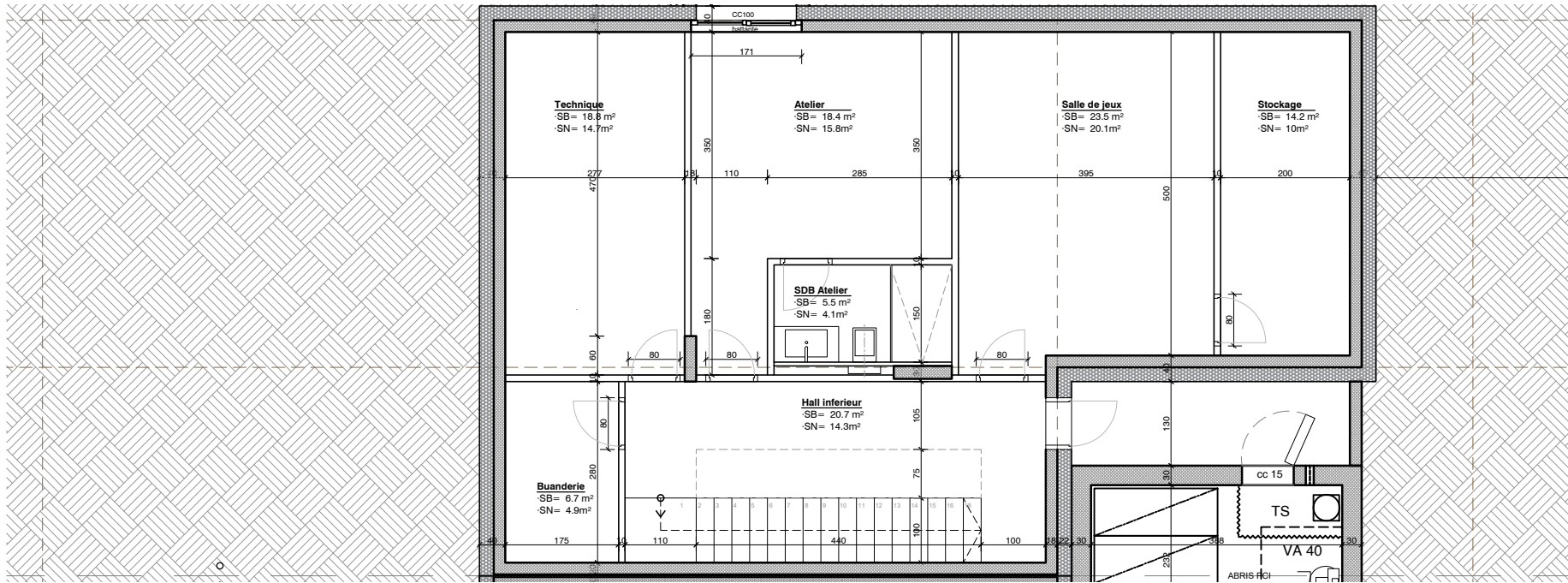


### SOUS-SOL

107,8m<sup>2</sup>

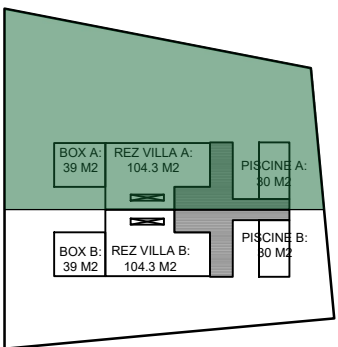


- Buanderie =6.7 m2
- Hall inf. =20.7 m2
- Technique =18.8 m2
- Atelier =18.4 m2
- SDB Atelier =5.5 m2
- Salle jeux =23.5 m2
- Stockage =14.2 m2

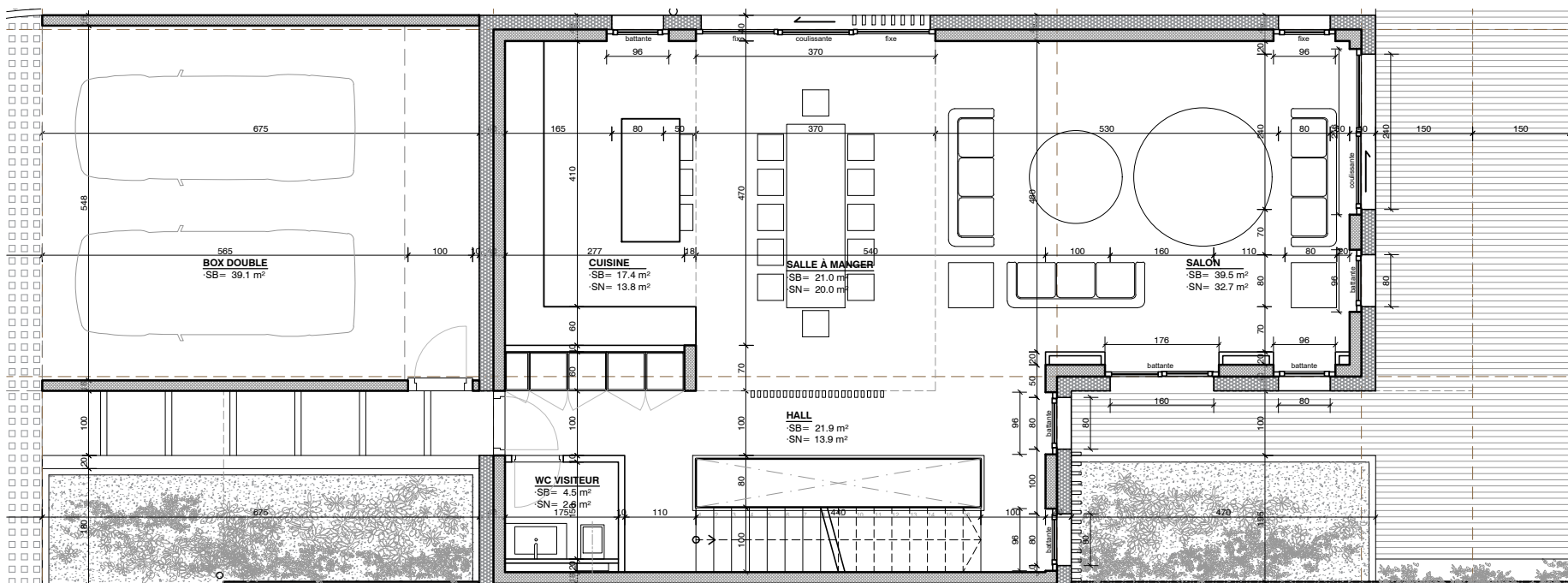


### REZ

104,3m<sup>2</sup>

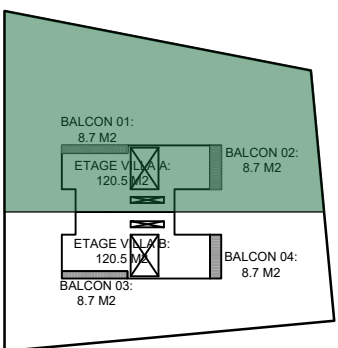


- Cuisine =17.4 m2
- Sâm =21 m2
- Salon =39.5 m2
- WC visit. =4.5 m2
- Hall =21.9 m2

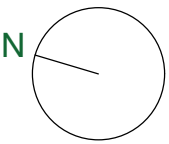
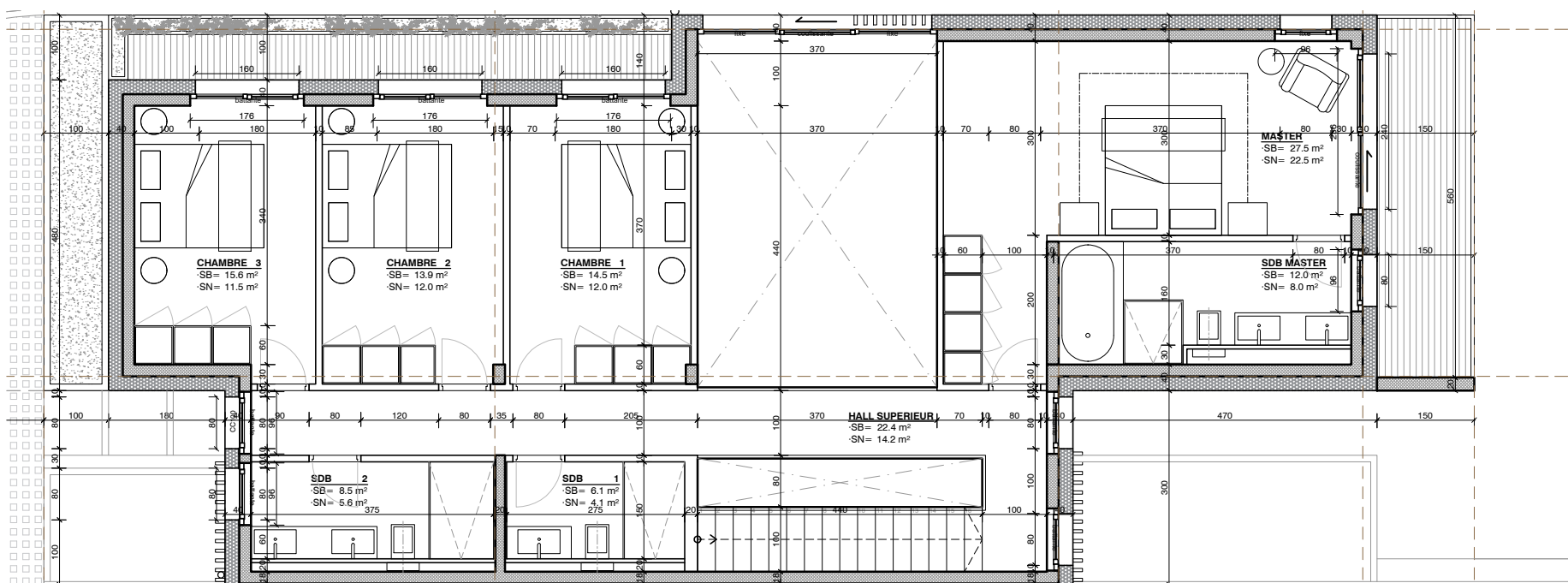


### ETAGE

120,5m<sup>2</sup>



- Chambre 3 =15.6 m2
- Chambre 2 =13.9 m2
- Chambre 1 =14.5 m2
- SDB 2 =8.5 m2
- SDB 1 =6.1 m2
- Master =27.5 m2
- SDB Master =12 m2
- Hall supérieur =22.4 m2



OBJET: Construction de deux villas jumelées.  
 ADRESSE: Chemin des Buclines 32, 1253 Chêne-Bougeries  
 PROPRIETAIRES: Consortium H2BT Sarl  
 PLAN DE: VENTE VILLA A

PARCELLE: 55

DATE: 27/11/2020

ECHELLE: 1/80

N.PLAN: VA

AUTORISATION

**NEAL YMAR**  
- ARCHITECTES -

RUE ROUSSEAU 5, 1201 GENEVE  
 +41 (0)22 301 21 21  
 INFO@NEALYMAR.CH  
 WWW.NEALYMAR.CH

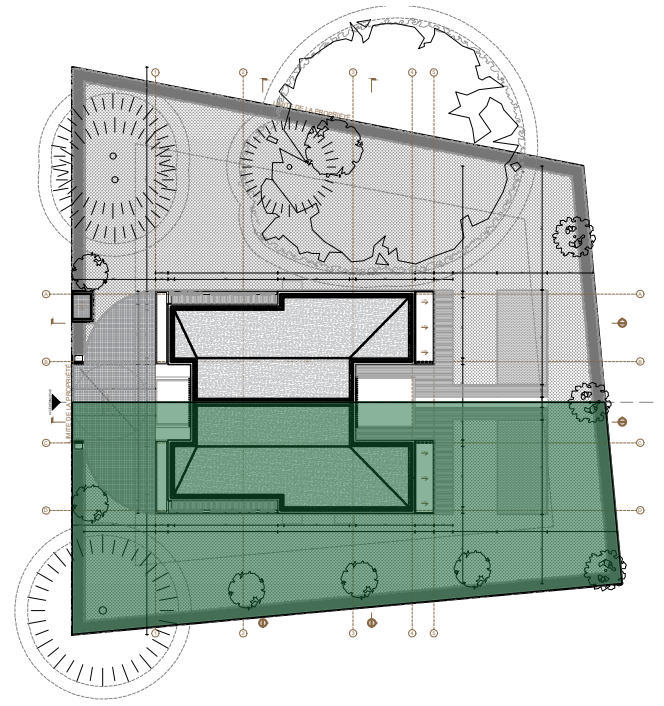
# VILLAS JUMELÉES BUCLINES 32-34

Chemin des Buclines 32, 1253 Chêne-Bougeries

## VILLA B

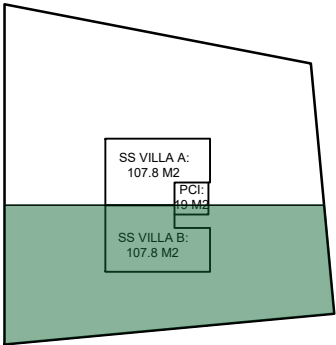
### INFORMATIONS RELATIVES AU LOT

|                 |   |         |                |                    |   |      |                |
|-----------------|---|---------|----------------|--------------------|---|------|----------------|
| - Surface Brute | = | 224,8   | m <sup>2</sup> | - Terrasse         | = | 37,7 | m <sup>2</sup> |
| - Surface SS    | = | 107,8   | m <sup>2</sup> | - Jardin           | = | 410  | m <sup>2</sup> |
| - N° hors-sol   | = | 2       |                | - Jardinière       | = | 7,5  | m <sup>2</sup> |
| - N° sous-sol   | = | 1       |                | - Piscine (option) | = | 30   | m <sup>2</sup> |
| - H sous plaf   |   |         |                | - Terrain          | = | 705  | m <sup>2</sup> |
| SS              | = | 2,40/70 | m              |                    |   |      |                |
| REZ             | = | 2,70    | m              |                    |   |      |                |
| ETAGE           | = | 2,70    | m              |                    |   |      |                |
| - Balcons       | = | 17,4    | m <sup>2</sup> |                    |   |      |                |

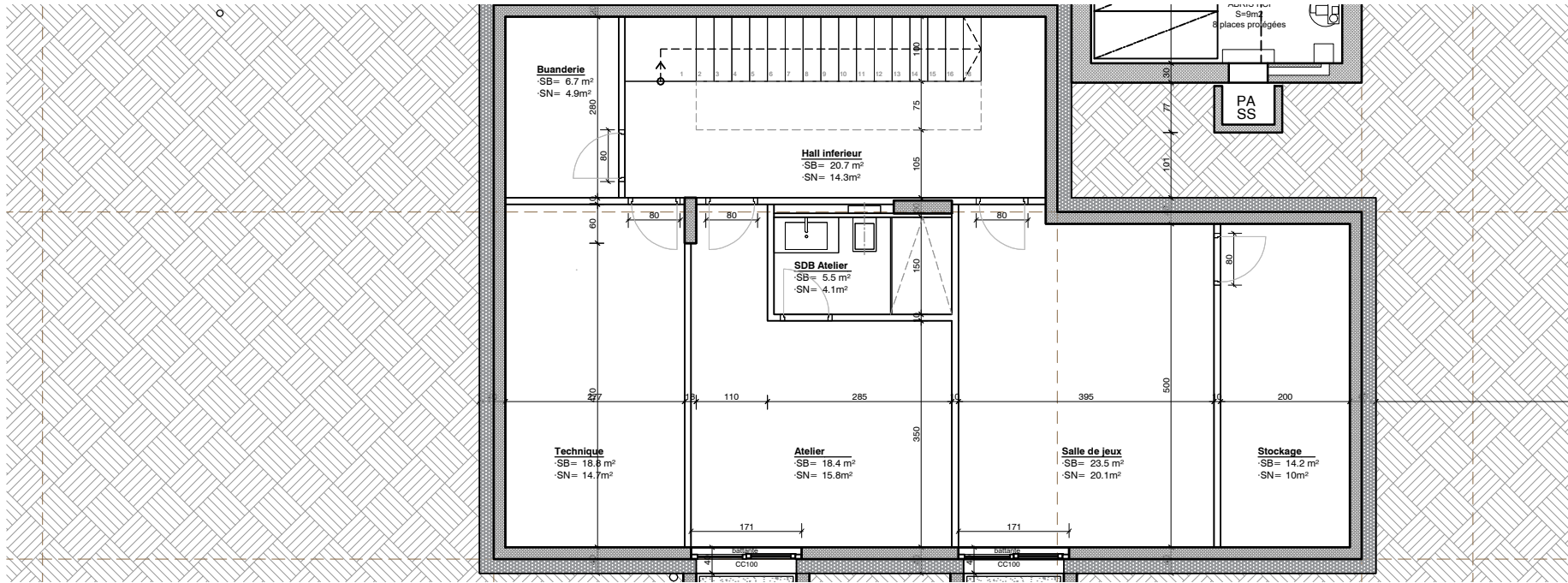


### SOUS-SOL

107,8m<sup>2</sup>

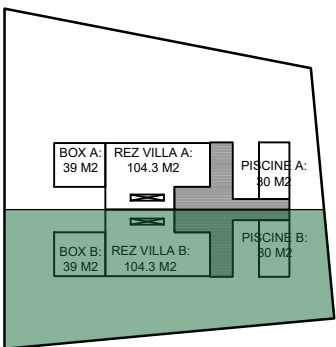


- Buanderie = 6.7 m<sup>2</sup>
- Hall inf. = 20.7 m<sup>2</sup>
- Technique = 18.8 m<sup>2</sup>
- Atelier = 18.4 m<sup>2</sup>
- SDB Atelier = 5.5 m<sup>2</sup>
- Salle jeux = 23.5 m<sup>2</sup>
- Stockage = 14.2 m<sup>2</sup>

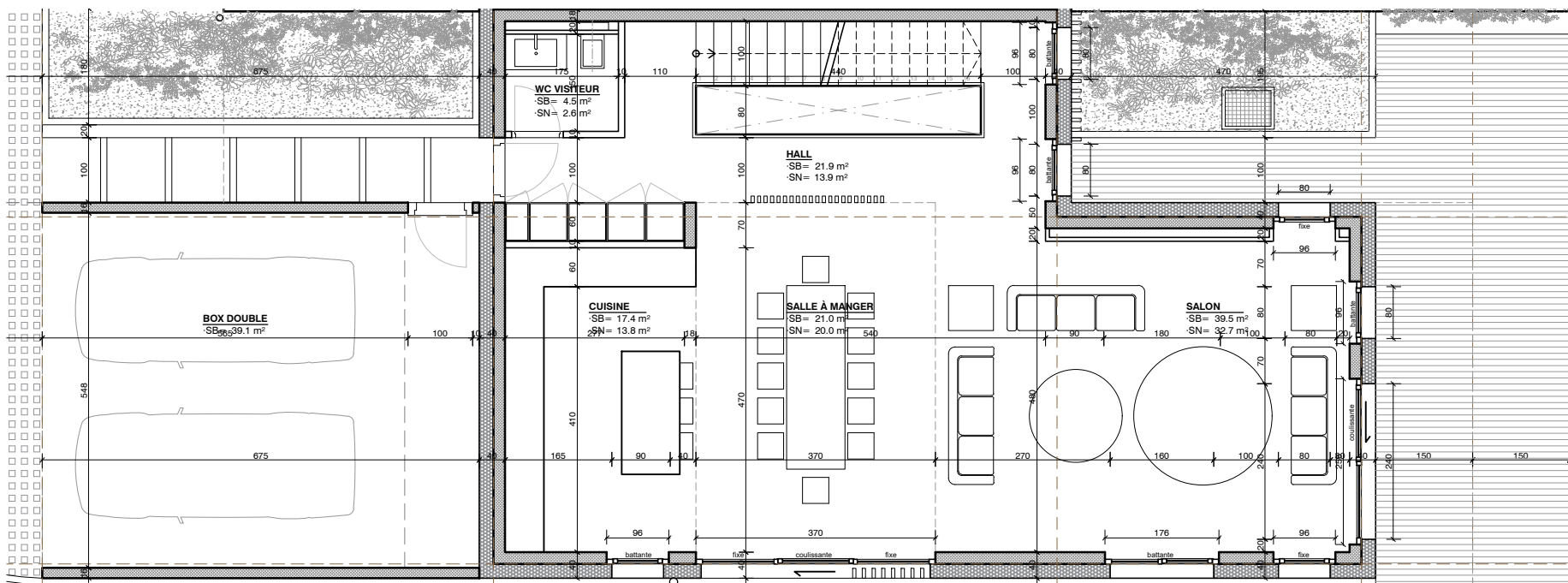


### REZ

104,3m<sup>2</sup>

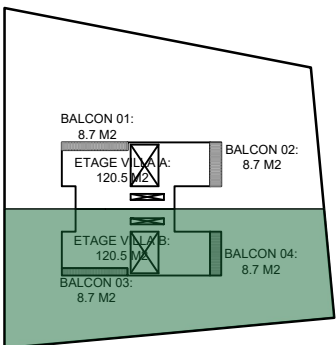


- Cuisine = 17.4 m<sup>2</sup>
- Sâm = 21 m<sup>2</sup>
- Salon = 39.5 m<sup>2</sup>
- WC visit. = 4.5 m<sup>2</sup>
- Hall = 21.9 m<sup>2</sup>

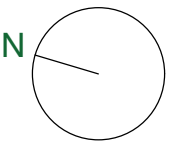
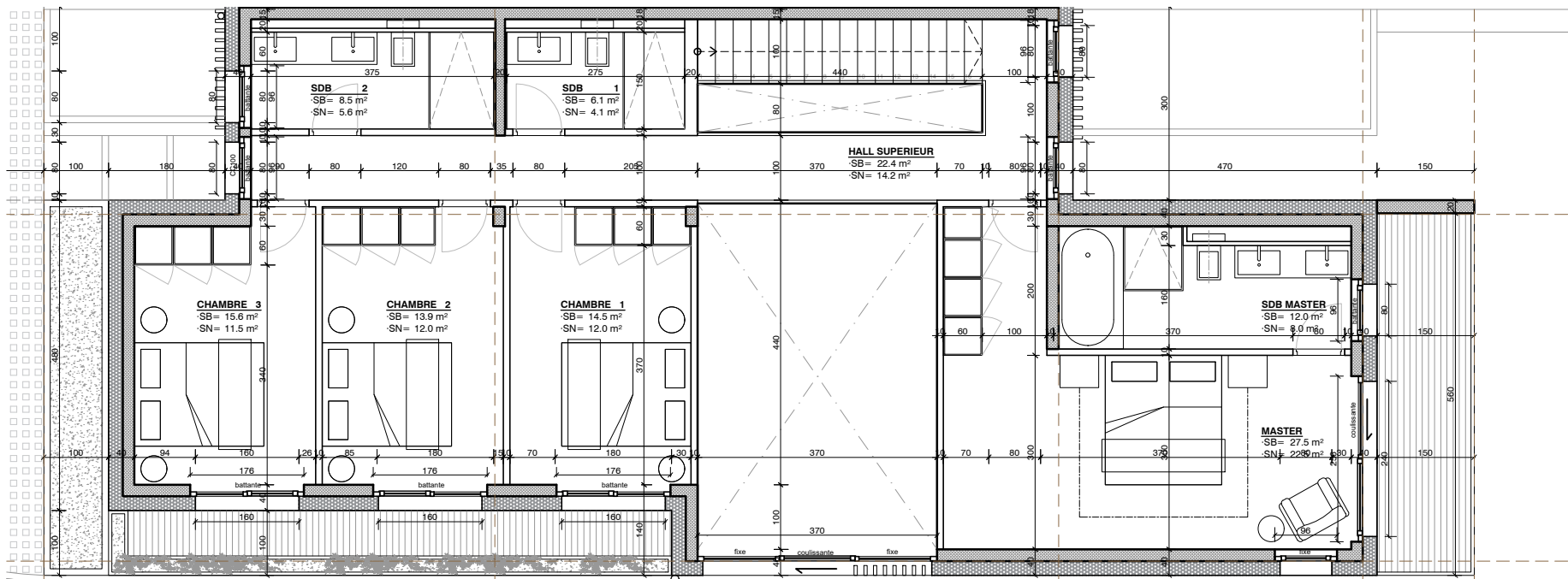


### ETAGE

120,5m<sup>2</sup>



- Chambre 3 = 15.6 m<sup>2</sup>
- Chambre 2 = 13.9 m<sup>2</sup>
- Chambre 1 = 14.5 m<sup>2</sup>
- SDB 2 = 8.5 m<sup>2</sup>
- SDB 1 = 6.1 m<sup>2</sup>
- Master = 27.5 m<sup>2</sup>
- SDB Master = 12 m<sup>2</sup>
- Hall supérieur = 22.4 m<sup>2</sup>



|                |  |              |    |          |            |   |
|----------------|--|--------------|----|----------|------------|---|
| OBJET:         | Construction de deux villas jumelées.        | PARCELLE:    | 55 | DATE:    | 27/11/2020 | <b>NEAL YMAR</b><br>- ARCHITECTES -<br>RUE ROUSSEAU 5, 1201 GENÈVE<br>+41 (0)22 301 21 21<br>INFO@NEALYMAR.COM<br>WWW.NEALYMAR.CH |
| ADRESSE:       | Chemin des Buclines 32, 1253 Chêne-Bougeries |              |    | ECHELLE: | 1/80       |   |
| PROPRIÉTAIRES: | Consortium H2BT Sarl                         |              |    | N.PLAN:  | VB         |   |
| PLAN DE:       | <b>VENTE VILLA B</b>                         | AUTORISATION |    |          |            |   |